

## Charm City's Ya Gotta Regatta

September 21, 2019  
 Downtown Sailing Center  
 1425 Key Highway Baltimore,  
 Maryland 21230

### SAILING INSTRUCTIONS (October 18, 2018 Update) PERFORMANCE HANDICAP RACING FLEET (PHRF) RACE

#### PART 1

1. Race Headquarters will be located at the Downtown Sailing Center and will be open from 0800-1600 on Saturday September 15, 2018.
2. Regatta webpage: [www.downtownsailing.org/charmcitysyagottaregatta.com](http://www.downtownsailing.org/charmcitysyagottaregatta.com)
3. Post-race dock parking space reservations may be made by calling the DSC Programs Director, Stuart Proctor, at 410-727-0722, prior to the regatta.
4. Schedule: Saturday September 15, 2018:

0915-0945 Info Q&A and Watch Syncing @ DSC 'A' Dock, 1425 Key Highway

1100-1130 Race Check-In, VHF Channel 68

1130-1230 PHRF Pursuit Race Start

\*Individual boat start times are listed on "Attachment B", on the DSC Regatta webpage, and will be announced by the DSC Race Management upon request beginning at 1120, Channel 68

Post-race party and awards at Little Havana to start at 1600.

#### PART 2

##### 1. RULES

- 1.1 The regatta shall be governed by the 'rules' as defined in the 2017-2020 Racing Rules of Sailing (RRS).
- 1.2 Where these Sailing Instructions (SI) differ from the RRS, these SI shall take precedence.
- 1.3 SI 14.6 changes the proceedings outlined in Part 5 Section B and Appendix M.

##### 2. NOTICE TO COMPETITORS

Official notices and numbered addenda to these Sailing Instructions will be posted online via the regatta webpage: [www.downtownsailing.org/charmcitysyagottaregatta](http://www.downtownsailing.org/charmcitysyagottaregatta)

##### 3. CHANGES TO SAILING INSTRUCTIONS

Any change to the sailing instructions will be sent to the participants before the regatta and/or communicated via VHF Radio, Channel 68.

##### 4. RADIO USE

- 4.1 All competitors shall carry a working VHF radio aboard their boat.
- 4.2 The Race Committee will use VHF channel 68 to communicate with the PHRF Race Competitors. All Competitors are reminded that mariners are required by law to monitor VHF Channel 16.
- 4.3 **Radio Check-In:** Race Committee will be on station at the head of the DSC Dock by 1120. After 1120 but prior to their start time, boats shall notify the Race Committee of their presence in the starting area.
- 4.4 The Race Committee will respond to transmissions to acknowledge retirements, protests or redress
- 4.5 **Coordinating Start Times** – *The starting times will be based off UTC local time. There will be a courtesy time check at 1130:00 via VHF channel 68. Please sync your watch via the Naval Observatory number or other suitable method in advance. Call - +1 202 762-1401*

##### 5. SAFETY

- 5.1 A boat that retires from a race shall notify the Race Committee, VHF 68, as soon as possible, or call Stuart Proctor, DSC Programs Director, by phone at 443-794-5060 in the event of poor VHF connectivity.

**5.2** Boats shall not exercise right of way, cross in close proximity to, or interfere with the reasonable transit of the race area by a freighter, tug, or other commercial vessel.

## **6. SCHEDULE OF RACES**

**6.1** Racing is scheduled for the PHRF Fleet on Saturday, September 15, 2018, 1130.

**6.2** It is the Race Committee's intention to run a single PHRF Race in Pursuit format.

**6.3** The scheduled start times can be found on Attachment 2 of the SI's. There will be no formal warning signal.

## **7. RACING AREA**

Races will be conducted on the waters of Baltimore's Inner Harbor, the Patapsco River and the Middle Branch Patapsco River in the region south to southeast of the eastern tip of Whetstone Point (Fort McHenry.)

## **8. AREAS THAT ARE OBSTRUCTIONS**

The area between the three (3) green buoys off the north/northeast shore of Fort McHenry and the shore itself shall be considered an obstruction. No sailboat shall enter this area. See Attachment A for additional information.

For reference these buoys are:

"7" QG	N39°16.073'	W076°34.590'
"5" FL G 4s	N39°15.954'	W076°34.555'
"3" QG	N39°15.620'	W076°34.539'

## **9. COURSES**

**9.1** Courses for the PHRF Race, all divisions, is as follows:

1. Start at DSC 'A' Dock (39° 16.508'N 76° 36.000'W) between the staff displaying an orange flag on the dock and the course side of the spherical orange inflatable drop mark.

2. Leave "NH" to Starboard (39° 16.213'N 76° 34.570'W)

3. Leave "FM" to Port (39° 15.397'N 76° 34.305'W)

4. Round "FSK buoy", leaving it to Port (39° 13.455'N 76° 31.711'W)

5. Leave "FM" to Starboard (39° 16.213'N 76° 34.570'W)

6. Leave "NH" to Port (39° 16.213'N 76° 34.570'W)

7. Finish between the staff displaying an orange flag on the DSC dock and the course side of the spherical orange inflatable drop mark.

**Course length: 9.7 nm** Start times are based upon a theoretical scratch boat with a PHRF rating of 300.

**9.2** A course diagram is posted on "Attachment C". This image is for informational purposes only and is not intended for use as a navigation aid.

More information about Distances from and Bearings to Marks can be found via BCYA's webpage at

<http://www.bcy.com/marks/BCYAMarks.pdf>

**9.3** An alternative shorter course may be announced to competitors up-to 36 hours prior to the regatta. All communications will be posted to the regatta website and updated in the Sailing Instructions. The short course will begin at "FM", with start times adjusted accordingly.

## **10. MARKS**

The starting and finishing mark will be a spherical orange inflatable drop mark commonly referred to as a "hippity hop buoy." All other marks are posted above and can be found on NOAA Chart 12881.

## **11. THE START**

**11.1** The Starting Line will be between a staff displaying an orange flag on the NW head of the DSC Dock DSC and the course side of a spherical orange inflatable drop mark.

## **12. THE FINISH**

**12.1** The finishing line will be between a staff displaying an orange flag on the head of the DSC Dock and the course side of a spherical orange inflatable drop mark.

## **13. TIME LIMITS**

**13.1** The time limit for the PHRF Race will be 5 hours. The time limit may be changed at any time by Race Management.

#### **14 PENALTY SYSTEM**

**14.1** A boat intending to protest shall follow the provisions of RRS 61.1(a).

**14.2** When there is contact involving a DSC boat, the DSC boat shall protest the other boat or shall accept the penalty, which may be to retire.

**14.3** For the purposes of interpreting rule 44.1(b), "serious damage" shall consist of any damage or contact that results in visible or structural damage."

**14.4** Promptly following the completion of the race, a boat that intends to protest an incident in that race shall notify the Race Committee of the name of the boat(s) that she intends to protest before that boat leaves the racing area.

**14.5** Directly following the close of the protest time limit, Arbitration shall be held for each protest according to the prescriptions in Appendix T.

**14.5.a** Arbitration will be held near the DSC docks in the order of protest forms received.

**14.6** As soon as practical after arbitration, and before either involved team leaves the dockage area, the jury will hold a "3 minute justice" hearing, comprised solely of a protest committee and a single rep. Before the hearing has begun, the Protestor has one minute to explain the reason for his/her party's protest to the Protest Committee.

A. The Protestee has one minute to explain his/her party's position.

B. The Protest Committee shall dismiss the two competitors and will deliberate and reach a decision in 1 minute.

This sailing Instruction changes the proceedings outlined in Part 5 Section B and Appendix M.

**14.6b** Protest hearings will be held immediately following arbitration under the tree by the entrance to 'A' Dock (or another suitable, nearby, announced location) at the Downtown Sailing Center, 1425 Key Hwy Baltimore, MD 21230, in the order in which they are received.

**14.7** Protest forms and Penalty forms are available from the Race Committee and extra copies are located in the Race Committee bag. The Protest form may also be downloaded at:

<https://www.ussailing.org/wp-content/uploads/2018/01/US-Sailing-2017-2020-Protest-Form.pdf> and will be made available to all skippers at the skippers' meeting.

**14.8** Protests may be withdrawn in writing and attached to the Protest Form, per Rule T4.

**14.9** The protest time limit is one hour after the last boat in the same fleet finishes the last race of the day. The same time limit applies to requests for redress. The race office consists of the Race Committee and the Race Committee Bag. The protest committee shall extend the time limit if there is good reason to do so.

**14.10** Protest forms and Penalty forms are available from the Race Committee and extra copies are located in the Race Committee bag. The Protest form may also be downloaded at:

<https://www.ussailing.org/wp-content/uploads/2018/01/US-Sailing-2017-2020-Protest-Form.pdf> and will be made available to all skippers at the one-design skippers' meeting.

#### **15. SCORING**

**15.1** Boats will be scored according to actual time crossing the finish line. Corrected times will have already been incorporated into the Pursuit Start times. (Refer to regatta website and Attachment 'B' for posted start times).

#### **16. PRIZES**

**16.1** Prizes will be given as follow:

Spinnaker Division: 1<sup>st</sup>, 2<sup>nd</sup> place

Non-Spinnaker Division: 1<sup>st</sup>, 2<sup>nd</sup> place

Awards will be presented at the post-race party Saturday, September 16 at Little Havana.

#### **17. DISCLAIMER OF LIABILITY**

Competitors participate in the regatta entirely at their own risk. The organizing authority will not accept any liability for material damage or personal injury or death sustained in conjunction with or prior to, during, or after the regatta.

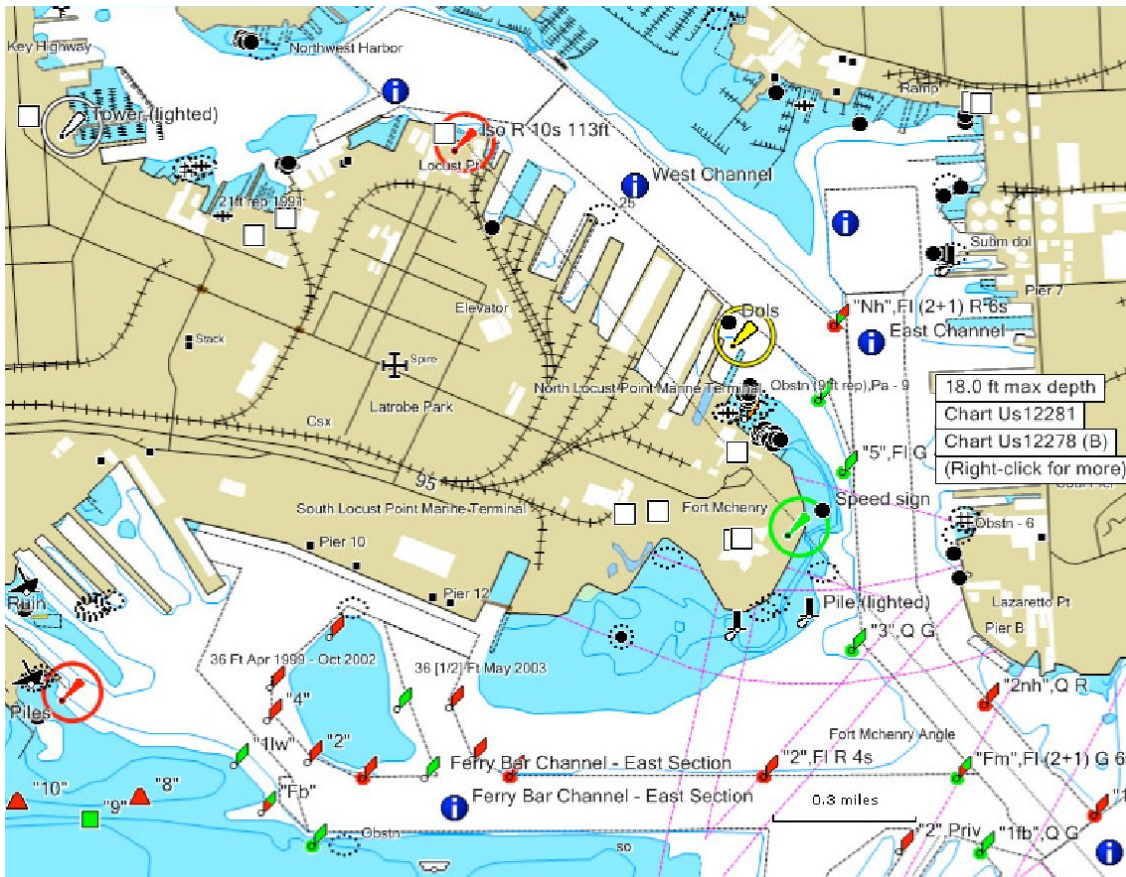
The Skipper/Owner shall be responsible for the actions of his or her crew and guest(s). There shall be no alcohol aboard DSC-owned boats while racing or intending to race. In the event of serious breach of conduct, sportsmanship, destruction of property, underage drinking, or failure to comply with the request of any DSC

Employee or DSC Volunteer, the Skipper/Owner will be held responsible and the boat or competitor may be subject to expulsion from the regatta by the DSC Executive Director.

IMPORTANT NOTE - COMMERCIAL TRAFFIC: COMMERCIAL TRAFFIC, LARGE SHIPS, TUG BOATS, WATER TAXIS, ETC., HAVE RIGHT OF WAY AS THE "STAND-ON" VESSELS AT ALL TIMES AND RACE PARTICIPANTS WILL BE THE "GIVEWAY" VESSELS. RACE PARTICIPANTS SHOULD KEEP A LOOKOUT POSTED AT ALL TIMES AND STAY WELL CLEAR OF ANY COMMERCIAL TRAFFIC.

BALTIMORE'S HARBOR IS AN ACTIVE COMMERCIAL PORT. SHIPS UNDERWAY MAY NOT LOOK LIKE THEY ARE MOVING, BUT IN FACT THEY MAY BE MOVING QUITE QUICKLY AND THEY ARE EXTREMELY LIMITED IN THEIR MANEUVERABILITY. FOR YOUR SAFETY, STAY WELL CLEAR OF ALL COMMERCIAL TRAFFIC! IF YOU HAVE ANY QUESTIONS REGARDING YOUR POSITION RELATIVE TO A COMMERCIAL VESSEL AND ITS MOVEMENTS, THEY CAN BE HAILED ON VHF CHANNEL 13 USING PROPER RADIO PROTOCOLS.

**ATTACHMENT A - RENDEZVOUS AND OBSTRUCTION AREAS**



"7" QG	N39°16.073'	W076°34.590'
"5" FL G 4s	N39°15.954'	W076°34.555'
"3" QG	N39°15.620'	W076°34.539'

## Attachment B

First Start Time		11:30:00		Course Length		9.7
Boat	Rating	Start Time	Rating Diff	Seconds	Minutes	Start Time
Scratch Boat	300	11:30:00				
Endeavour 32	205	11:45:22	95	921.5	0:15:22	11:45:22
Messin' About	198	11:46:29	102	989.4	0:16:29	11:46:29
Sprite Pearson 30 non-Spin	192	11:47:28	108	1047.6	0:17:28	11:47:28
J/22 & Sonar Non-Spin	189	11:47:57	111	1076.7	0:17:57	11:47:57
J/22 & Sonar Spin	180	11:49:24	120	1164	0:19:24	11:49:24
J/24 Non-Spin	180	11:49:24	120	1164	0:19:24	11:49:24
Horizon	175	11:50:13	125	1212.5	0:20:13	11:50:13
Evening Star	175	11:50:13	125	1212.5	0:20:13	11:50:13
Island Girl	175	11:50:13	125	1212.5	0:20:13	11:50:13
PEARSON 33-2 WK FP RFA	174	11:50:22	126	1222.2	0:20:22	11:50:22
Contessa 33 NS	147	11:54:44	153	1484.1	0:24:44	11:54:44
Contessa 33 Spin	144	11:55:13	156	1513.2	0:25:13	11:55:13
Project Mayhem	138	11:56:11	162	1571.4	0:26:11	11:56:11
Sizzle (pearson flyer)	138	11:56:11	162	1571.4	0:26:11	11:56:11
Bavaria 38 NS MAKANI	135	11:56:41	165	1600.5	0:26:41	11:56:41
Dark Crystal	135	11:56:41	165	1600.5	0:26:41	11:56:41
Artemis II Tartan 10	126	11:58:08	174	1687.8	0:28:08	11:58:08
Infrared (Baltic 35)	120	11:59:06	180	1746	0:29:06	11:59:06
Momentous	114	12:00:04	186	1804.2	0:30:04	12:00:04
Olson 30	108	12:01:02	192	1862.4	0:31:02	12:01:02
Vulture	96	12:02:59	204	1978.8	0:32:59	12:02:59
Toxic Catfish	96	12:02:59	204	1978.8	0:32:59	12:02:59
J/105	90	12:03:57	210	2037	0:33:57	12:03:57
Bad Medicine	84	12:04:55	216	2095.2	0:34:55	12:04:55
Intrigue	84	12:04:55	216	2095.2	0:34:55	12:04:55
Smoke	75	12:06:23	225	2182.5	0:36:23	12:06:23
Legacy	72	12:06:52	228	2211.6	0:36:52	12:06:52
AfterSchock	72	12:06:52	228	2211.6	0:36:52	12:06:52
Incorrigible 42424 j/35	72	12:06:52	228	2211.6	0:36:52	12:06:52
Silverback	69	12:07:21	231	2240.7	0:37:21	12:07:21
Farr 30 Non-Spin	63	12:08:19	237	2298.9	0:38:19	12:08:19
Farr 30 Spin	54	12:09:46	246	2386.2	0:39:46	12:09:46
J/111	39	12:12:12	261	2531.7	0:42:12	12:12:12



**“Attachment C”**

