

Charm City's Ya Gotta Regatta

September 30, 2023

The Downtown Sailing Center, Baltimore, MD

J/22 Sailing Instructions

The notation "[NP]" in a rule of the sailing instructions (SIs) means that a boat may not protest another boat for breaking that rule. This changes RRS 60.1(a).

1 RULES

- 1.1 This event is governed by the rules as defined in *The Racing Rules of Sailing* with US Sailing Prescriptions.
- 1.2 The following J/22 Class Rules apply:
 - (a) C.2.2 - CREW POSITIONING - RRS 49.1 is modified to permit the crew to project themselves outboard, while sitting on the deck, by hand-holding any **running rigging** in its standard position, or any fixed equipment on the boat other than **shrouds** or chainplates.
- 1.3 A competing boat's mainsail and jib shall consist of the DSC supplied sails. Neither the mainsail nor the jib may be replaced with another sail.
- 1.4 A competing boat's spinnaker shall conform to the J/22 one-design class rules. Sail number requirements shall not apply.
- 1.5 If there is a conflict between the Notice of Race and these Sailing Instructions, these Sailing Instructions will govern.

2 COMMUNICATION

- 2.1 Notices to competitors will be posted on the DSC website at <https://downtownsailing.org/ygr> and at the J/22 registration page at <https://downtownsailing.org/event-5369531>.
- 2.2 All information to competitors on the course will be broadcast on VHF channel 71. All participants shall be responsible for complying with all instructions provided.

2.3 [DP] While racing, except in an emergency, a boat shall not make voice or data transmissions and shall not receive voice or data communication that is not available to all boats.

3 CHANGES TO SAILING INSTRUCTIONS

3.1 Changes to these Sailing Instructions will be posted on the DSC Ya Gotta Regatta page (see link above) not later than 12 hours prior to the scheduled first Warning Signal for which they will be in effect.

3.2 Changes to a sailing instruction may be made on the water prior to the warning signal for each race by broadcasting via VHF channel 71.

4 CODE OF CONDUCT

4.1 [DP] Competitors and support persons shall comply with reasonable requests from race officials.

4.2 [DP] Competitors and support persons shall handle any equipment provided by the organizing authority with care, seamanship, in accordance with any instructions for its use and without interfering with its functionality.

5 SIGNALS MADE ASHORE

5.1 All communications ashore and on water shall be communicated on VHJF ch. 71 and/or communicated directly to each skipper. Race Committee may additionally display visual signals at or in the immediate vicinity of the DSC A-Dock.

6 SCHEDULE OF RACES

6.1 The schedule will be as follows:

8:00 - 9:00 am	Registration
9:00 am	Skippers' Meeting
11:00 am	Warning Signal for first race. Additional races will be started as soon as practical after the conclusion of each race.

6.2 No Warning Signal will be made after 3:00pm.

- 6.3 The Race Committee intends to run 5 races. A minimum of 1 race will be required to constitute a regatta.
- 6.4 RC will notify competitors via VHF ch. 71 and/or by 5 sounds that a start sequence will begin soon.
- 6.5 The race committee will notify the competitors of the completion of racing via VHF ch. 71.

7 CLASS FLAGS

- 7.1 The class flag will be a white flag with the J/22 sail insignia imprinted.

8 RACING AREAS

- 8.1 The racing areas will be as follows:

- A - Patapsco River North of Fort McHenry (aka Canton Turning Basin)

- B - Patapsco River SE of Fort McHenry, near 'FM'.

See Attachment A for Racing Areas Diagram

- 8.2 RC will inform the competitors of the racing area to be used for racing at the skippers' meeting and any course changes will be broadcast on VHF Channel 71.

9 THE COURSES

- 9.1 Course Diagrams are posted in Attachment 'B'.
- 9.2 Race Committee will announce the course prior to each warning signal on VHF ch. 71, and by displaying the course on her starboard side.
- 9.3 Race Committee intends to set the length of each leg at approximately 0.5 nm.

10 MARKS

- 10.1 All marks will be drop marks as follows:

- (a) Rounding marks will be orange cylinders unless replaced due to change of course.

- (b) The starting/finishing mark will be a yellow teardrop.

- 10.2 A "Keep Off" buoy may be tied astern of the Race Committee Boat and shall be considered an extension of the Race Committee Boat.

11 OBSTRUCTIONS

11.1 The following area is designated as an obstruction: The area of the Patapsco River between Fort McHenry and the three (3) green channel markers off its East shore: G “7”, G “5”, and G “3”. Boats shall not sail within the designated obstruction. See Attachment A and NOAA chart 12281 for details.

12 THE START

12.1 Races will be started using Appendix U (the Audible-Signal Racing System). This changes RRS 26.

12.2 The starting line will be between a staff displaying an orange flag on the committee boat and the course side of the port-end starting mark.

12.3 A boat that does not start within five (5) minutes after her starting signal will be scored Did Not Start without a hearing. This changes RRS A4 and A5.

12.4 Race Committee shall hail individual recalls on VHF ch. 71.

13 CHANGING THE NEXT LEG OF THE COURSE

13.1 To change the next leg of the course, the race committee will move the original mark or the finishing line to a new position.

14 THE FINISH

14.1 The finishing line will be between a staff displaying an orange flag on the committee boat and the course side of the finishing mark.

14.2 If the Race Committee signals a shortened course, the new finishing line shall be,

(a) for a finish to windward: between the course side of the windward mark and a staff displaying flag S.

(b) for a finish to leeward, between the course side of the finishing mark and a staff displaying flag S. This changes RRS 32.2

15 PENALTY SYSTEM

15.1 For the purposes of interpreting RRS 44.1(b), "serious damage" shall consist of any visible or structural damage.

16 TIME LIMITS

16.1 Time limits are as follows:

(a) Mark 1 time limit is 20 minutes. If no boat has passed Mark 1 within the Mark 1 time limit, the race will be abandoned.

(b) The race time limit is 45 minutes. If no boat has finished within the race time limit, the race will be abandoned.

16.2 Boats failing to finish within 10 minutes after the first boat sails the course and finishes will be scored Time Limit Expired (TLE) without a hearing. A boat scored TLE shall be scored points for the finishing place one more than the points scored by the last boat that finished within the 10 minutes. This changes RRS 35, A5.1, A5.2 and A10

17 PROTESTS AND HEARING REQUESTS

17.1 The protest time limit is 40 minutes after the last boat finishes the last race of the day or 20 minutes after the Race Committee docks, whichever is later.

1.1 In addition to the requirements of RRS 61, a protesting boat shall notify the Race Committee as soon as practical after finishing the race in which the incident occurred.

1.1 Hearing Request Forms are available from the “Racing” dockbox at the DSC’s main dock and at the DSC website:

(a) [Hearing Request Forms](#)

1.1 Notices will be posted no later than 10 minutes after the protest time limit to inform competitors of hearings in which they are parties. Race Committee will post notices at the “Racing” dockbox.

17.2 A boat intending to protest need not display a red flag. This changes RRS 61.1.

17.3 RRS 62.2(a) and 66.2(a) do not apply.

18 HEARINGS

18.1 As soon as practical after the protest time limit, hearings will be held at DSC’s “A” Dock, based on the following “3 Minute Justice” procedure:

(a) The protest committee will determine if the protest is valid.

(b) The protesting boat will have one minute to explain their position to the Protest Committee.

(c) The protestee has one minute to defend their position.

(d) The Protest Committee shall dismiss the two competitors and will deliberate and reach a decision in one minute.

19 SCORING

19.1 The Low Point scoring system of Appendix A will apply.

19.2 (a) When fewer than five (5) races have been completed, a boat's series score will be the total of her race scores.

(b) When five (5) or more races have been completed, a boat's series score will be the total of her race scores excluding her worst score.

20 SAFETY REGULATIONS

20.1 [NP] [DP] All boats shall check in with the race committee prior to racing by verbal hail to the signal boat.

20.2 [NP] A boat that retires from a race shall notify the race committee as soon as possible.

20.3 [NP] A boat that leaves the racing area prior to finishing the last race shall notify the race committee as soon as possible.

20.4 No check-out is required after completion of the last race.

20.5 No racing will occur if a Gale Warning is issued by the National Weather Service.

20.6 Race Committee may require boats to reef mainsails, forgo spinnakers, or wear lifejackets while racing, or any combination of the above, by announcing on VHF 71, if it deems that conditions dictate such actions.

21 BOATS PROVIDED BY THE ORGANIZING AUTHORITY

21.1 Boats will be provided for all competitors, who shall not modify them or cause them to be modified in any way except that:

(a) a compass may be tied or taped to the hull or spars;

(b) wind indicators, including yarn or thread, may be tied or taped anywhere on the standing or running rigging;

(c) adhesive tape may be used anywhere above the water line, provided it is removed after the completion of racing

21.2 Spinnakers, Spinnaker Sheets, and Twings are available by request from the DSC. All other necessary equipment is provided as standard. Requests can be submitted to john@downtownsailing.org.

21.3 [NP] The Penalty for not complying with one of the above instructions will be disqualification from all races sailed in which the instruction was broken.

21.4 Hulls, keels, and rudders shall not be scrubbed or cleaned below the waterline. The penalty for breaking this instruction shall be a score of DNE for all races sailed subsequent to cleaning. This changes RRS 63.1

21.5 Competitors shall report any damage or loss of equipment, however slight, to the organizing authority's representative immediately after securing the boat ashore. This can be reported directly to Race Committee, any DSC staff member, or by filling out the online [Boat Breakdown Form](#).

22 OFFICIAL VESSELS

22.1 Official vessels shall display a blue or yellow flag with the RC insignia.

23 ADVERTISING

23.1 A boat and her crew shall not display any brand advertising on competitors clothing, the boat, or sails without prior approval from the organizing authority. Boats failing to comply with this rule will be scored DNE for all races started without a hearing by the organizing authority. This rule is not intended to exclude unique team images but to discourage corporate promotion or sponsorship that is not pre-approved by the organizing authority.

23.2 Boats may be required to display advertising chosen and supplied by the organizing authority.

24 PRIZES

24.1 Prizes will be given to the top three (3) finishing boats.

25 DISCLAIMER OF LIABILITY

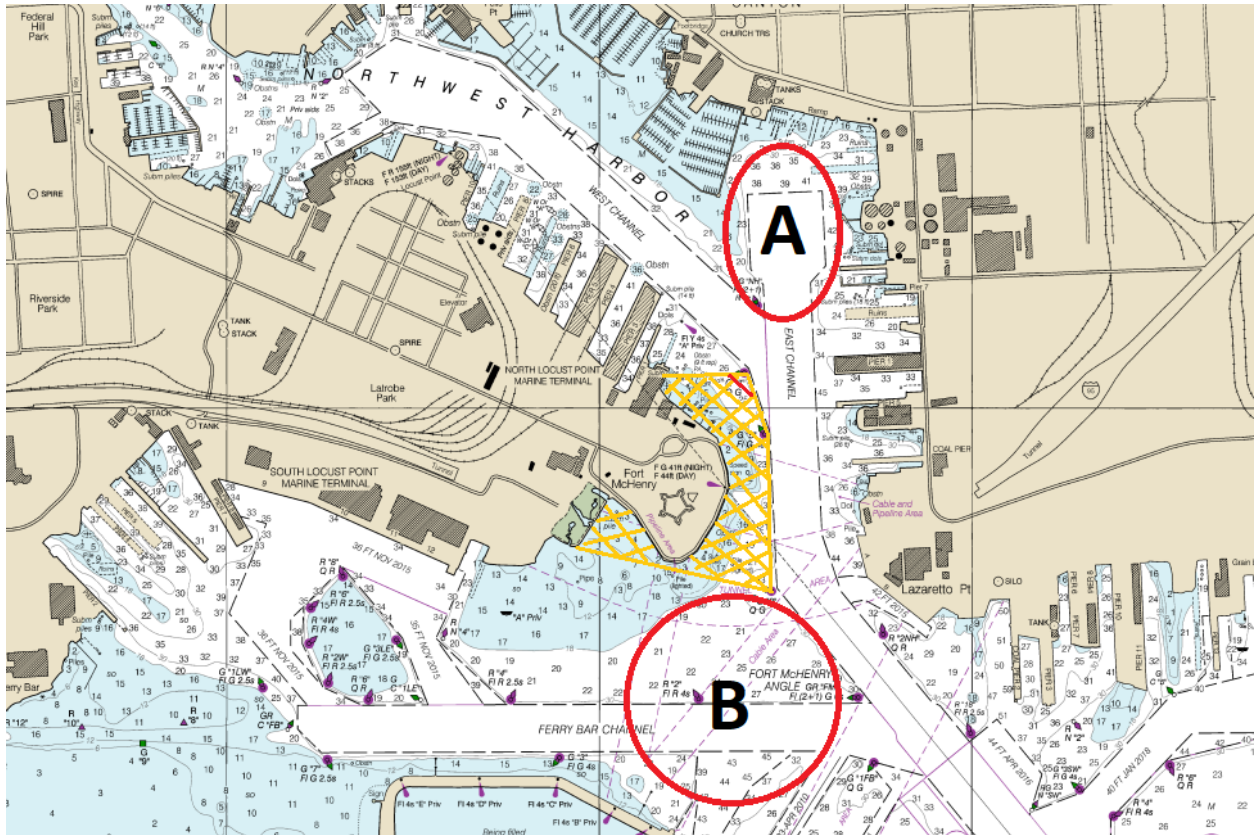
25.1 Competitors participate in the regatta entirely at their own risk. See RRS 4, Decision to Race. The organizing authority or its agents will not accept any liability for material damage or personal injury or death sustained in conjunction with or prior to, during, or after the regatta.

26 RIGHTS TO USE NAME AND LIKENESS

26.1 By participating in the *Ya Gotta Regatta*, competitors automatically grant to the organizing authority the right, in perpetuity, to make, use, and show, at their discretion, any photography, audio, and video recordings, and other reproductions of them made at the venue without compensation.

For detailed chart information, consult NOAA Chart 12281

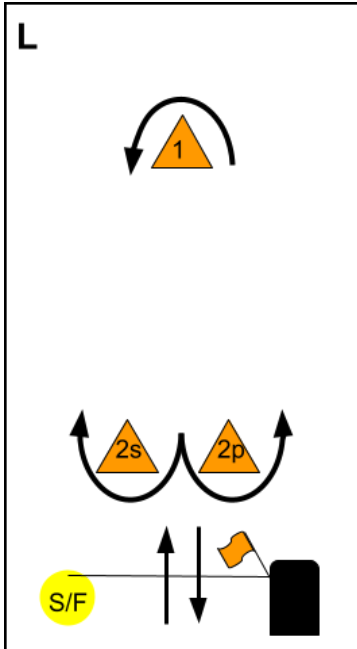
Attachment 'A'



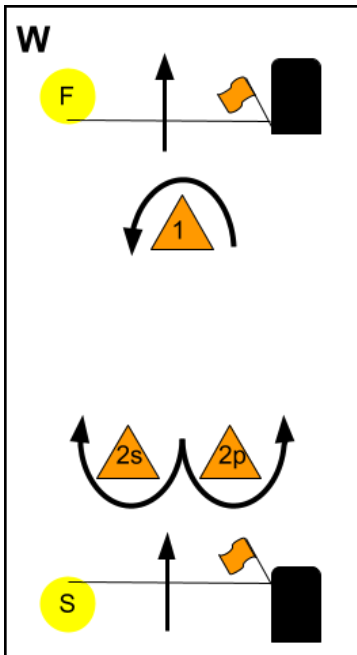
Racing Area "B" is the preferred course, depending on weather, traffic and other conditions. Race Committee will announce the course at the Skippers' Meeting, and any changes on VHF ch. 71.

The area shaded in Yellow is a designated obstruction and shall be avoided.

Attachment B: Course Diagrams



Course L - Windward/Leeward, Leeward Finish	
<i>Signal</i>	<i>Mark Rounding Order</i>
L2	Start - 1 - 2s/2p - 1 - Finish



Course W - Windward/Leeward, Windward Finish	
<i>Signal</i>	<i>Mark Rounding Order</i>
W2	Start - 1 - 2s/2p - Finish
W3	Start - 1 - 2s/2p - 1 - 2s/2p - Finish